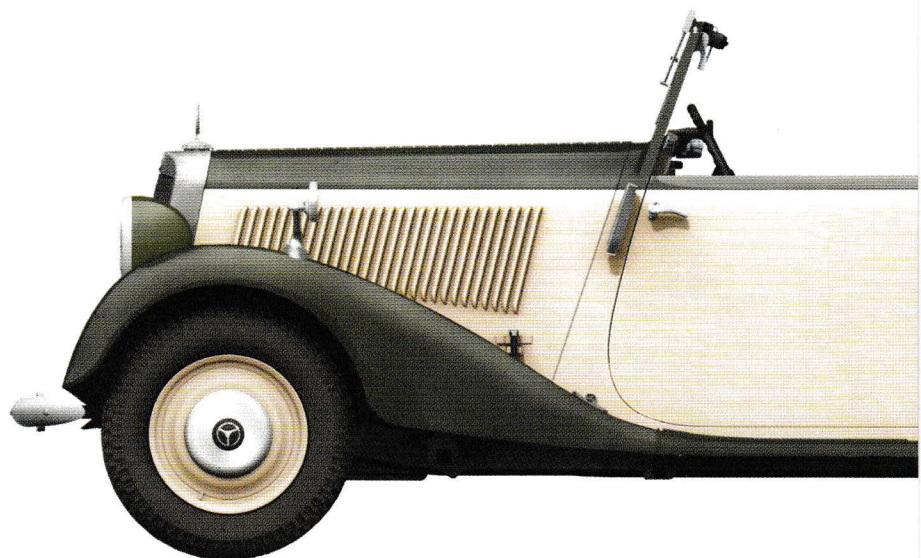
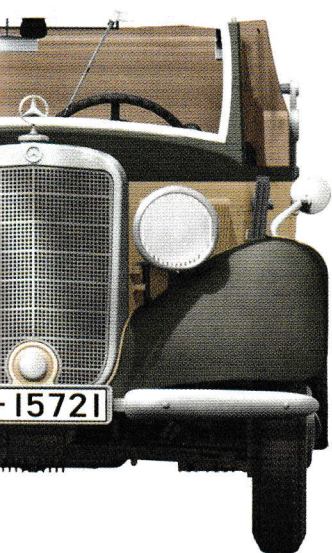


CABRIOLET B

GERMAN CAR TYPE 170V

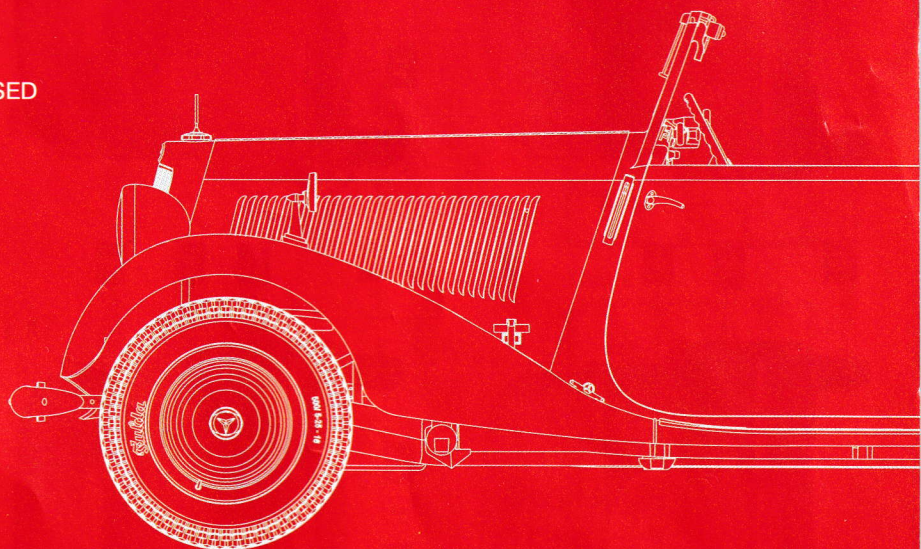
38018



GENERAL INSTRUCTION

SCALE 1:35

- HIGHLY DETAILED MODEL
- ALL DOORS CAN BE POSED OPEN & CLOSED
- PHOTO-ETCHED PARTS INCLUDED
- CLEAR PARTS INCLUDED
- DECAL SHEET FOR 6 MARKING OPTIONS
- 2 FIGURES INCLUDED



ATTENTION
Ne pas utiliser de colle ou de peinture à proximité d'une flamme nue, et aérer la pièce de temps en temps.
Pour retirer les pièces hors du cadre, utiliser des ciseaux spéciaux pour maquette le plastique en excès avec un cutter ou une lime.
Voir la fin de cette colonne pour la signification des symboles.
Après l'assemblage peut rester des pièces inutilisées.

ZUR BEACHTUNG
Kleber und Farbe nicht nahe von offenem Feuer verwenden und das Fenster von Zeit zu Zeit zur Belüftung öffnen.
Zum Abschneiden der Teile vom Verbundstück eine Modellerschere verwenden und die überstehenden Plastikteile mit einem Messer oder einer Feile beseitigen.
Die Bedeutung der Symbols finden Sie unten in dieser Nach dem Zusammenbau des Modells, können einzelne Teile übrig bleiben.

УВАГА
При використанні клею та фарб всі роботи проводити подал від джерела вогню у приміщенні, що добре провентильоване.
Деталі відкривати від листівки ножом або іншим ручним інструментом. Зачистити облії та місця срезу за допомогою надфайлу та наждачного паперу. Будівництво моделі виконувати згідно з схемою. Для зручності побудови кожну деталь позначена номером.
Після складання можуть залишитися невикористані деталі.

ATTENZIONE
Non usare colla o vernice vicino a fiamme esposte, e aprire le finestre di tanto in tanto per cambiare l'aria. Quando si staccano parti del cartello, usare forbici da modellismo e eliminare la plastica in eccesso con un coltello o una lima. Vedere in fondo a questa colonna per il significato. Dopo l'assemblaggio possono rimanere parti inutilizzate.

ВНИМАНИЕ
При использовании клея и красок все работы производить в проветриваемом помещении вдали от источников огня.
Детали отделять от листовки ножом или другим режущим инструментом. Зачистить облой и места среза при помощи надфайла и наждачной бумаги. Сборку моделей производить согласно схеме сборки.
Для удобства сборки каждая деталь обозначена номером.
После сборки набора могут остаться неиспользованные детали.

CAUTION
When you use glue or paint, do not use near open flame, and use in well ventilated room. When you take parts off from the runner frame, use modeling scissors or cutter.
See the bottom of this column for the meaning of symbols.
Extra details can remain after assembling of the kit.



MAKE 2PCS
2 TEILE FERTIGEN
EFFECTUER 2 PIECES
FARE DUE PEZZI
TEE 2 KPL
GOR 2 ST
ПОВТОРИТЬ ДВА РАЗА
КІЛЬКІСТЬ РАЗІВ



DO NOT CEMENT
NICHT KLEBEN
NE PAS COLLER
NON INCOLLARE
EILIMAA
LIMMAEJ
НЕ ИСПОЛЬЗОВАТЬ КЛЕЙ
НЕ КЛЕІТИ



OPTIONAL
NACH BELIEBEN
FACULTATIF
FACOLTATIVO
VALINNANVARAINEN
VALBAAR
ВАРИАНТИ
ВАРИАНТИ



OPEN HOLE
OFFNEN
FAIRE UN TROU
FORO APERTO
AVAA REIKÄ
OPPIÄ HALET
СДЕЛАТЬ ОТВЕРСТИЕ
ЗРОБИТИ ОТВІР



REMOVE
ENTFERNEN
RETIRER
SEPARARE
POISTA
AVLAGSNA
СДЕЛАТЬ ОТВЕРСТИЕ
ВІДРІЗАТИ



BEND
BITTE BIEGEN
PLIER S'IL VOUS PLAÎT
PIEGARE
TAITA
BÖCKA
ВЫГНУТЬ
ВИГНУТИ



SCRATCHBUILD
AM MEISTEN ZU MACHEN
FAIRE LE PLUS
RENDITI
TEETISE
GOR DIG SJÄLV
СДЕЛАТЬ САМОМУ
ЗРОБИТИ САМОМУ



PARTS NOT FOR USE
TEILE WERDEN NICHT VERWENDET
N'EST PAS UTILISE
PARTI NON PER L'USO
OSIA EI KÄYTTÄ
INTE FÖR ANVÄNDNING
НЕ ИСПОЛЬЗУЕТСЯ
НЕ ВИКОРИСТОВУЄТЬСЯ

PARTS

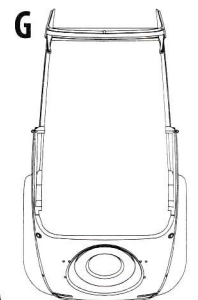
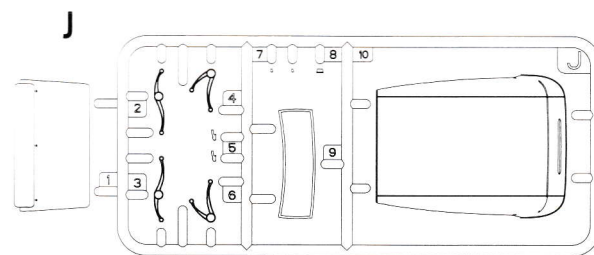
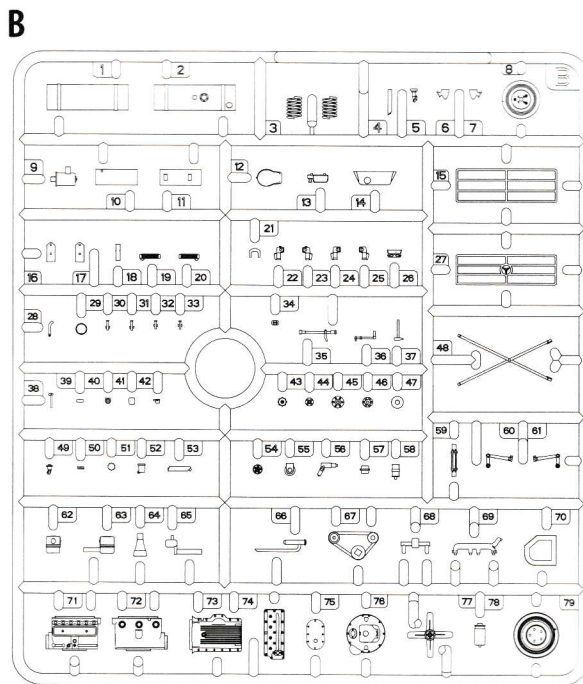
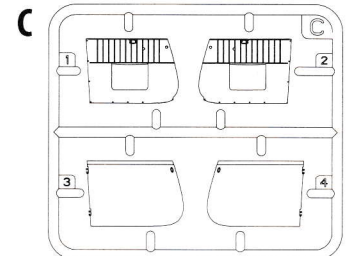
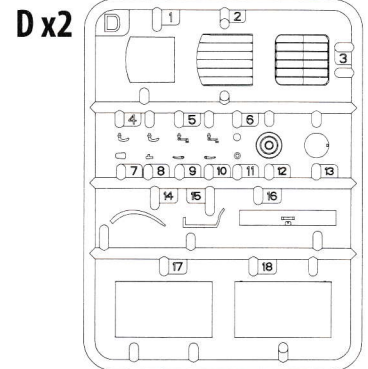
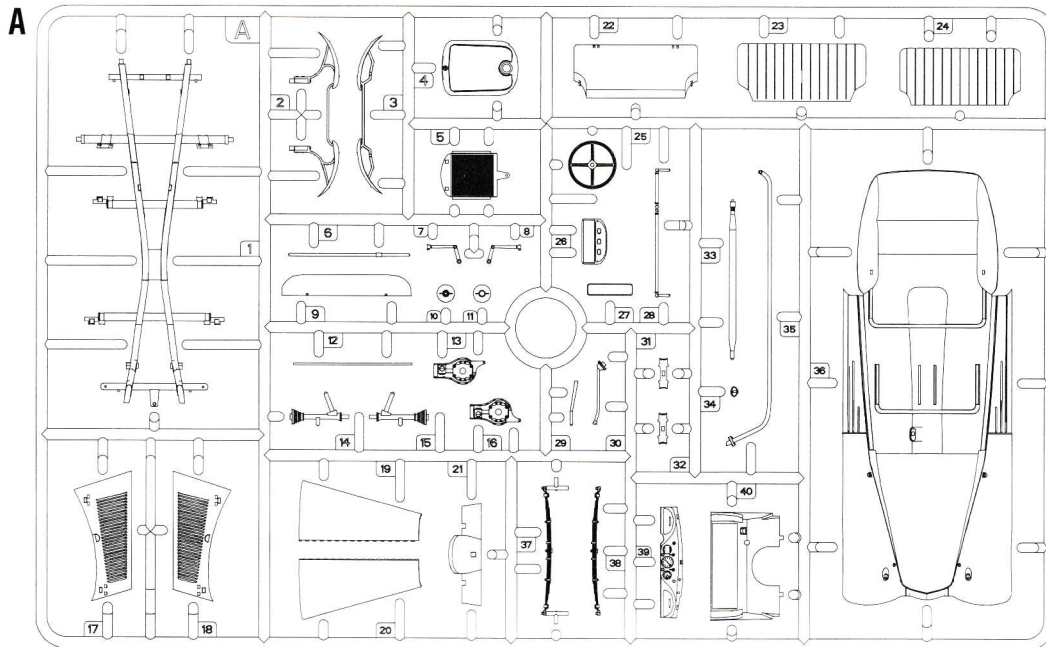


Figure A

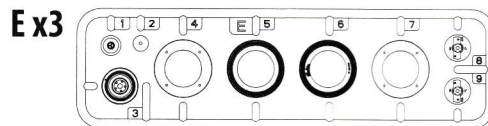
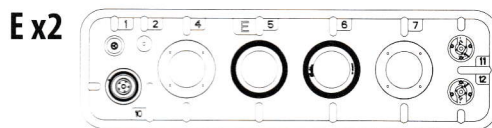
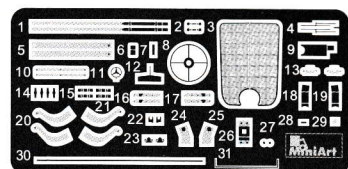


Figure D

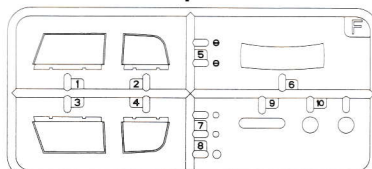


Decal sheet

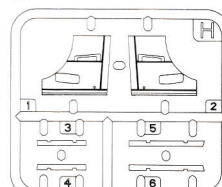
PE Photo-etched parts



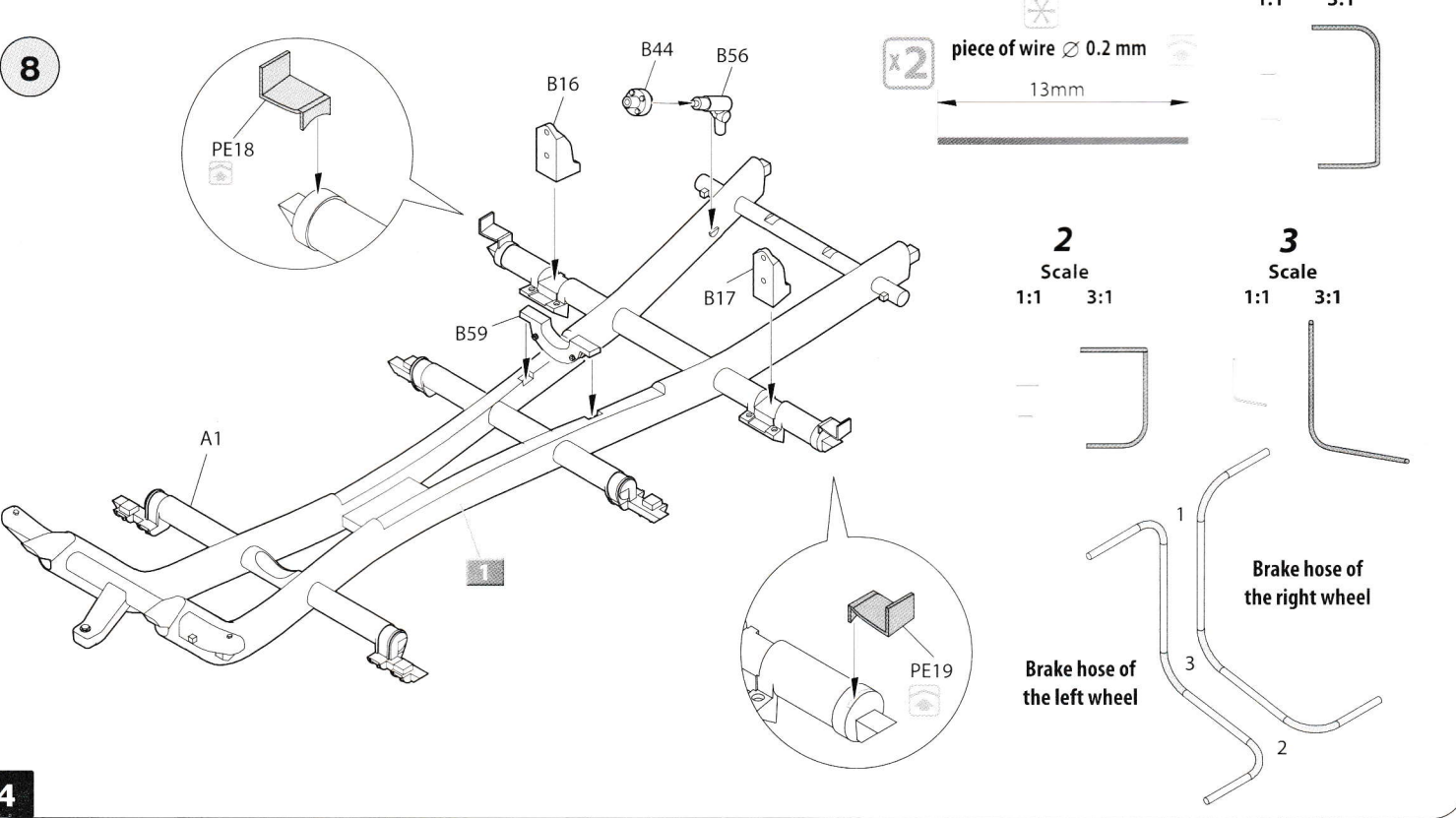
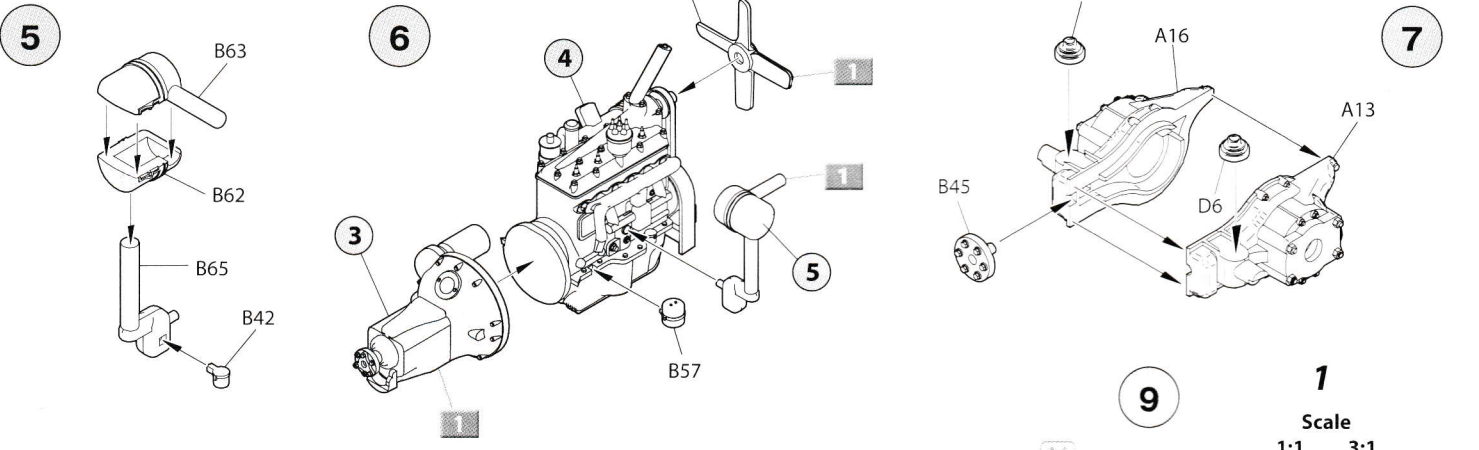
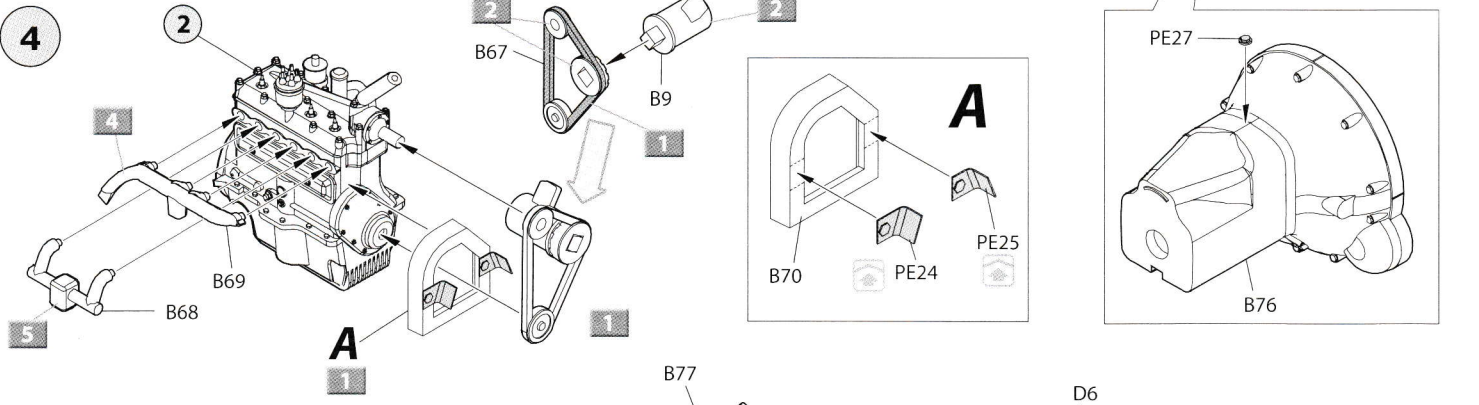
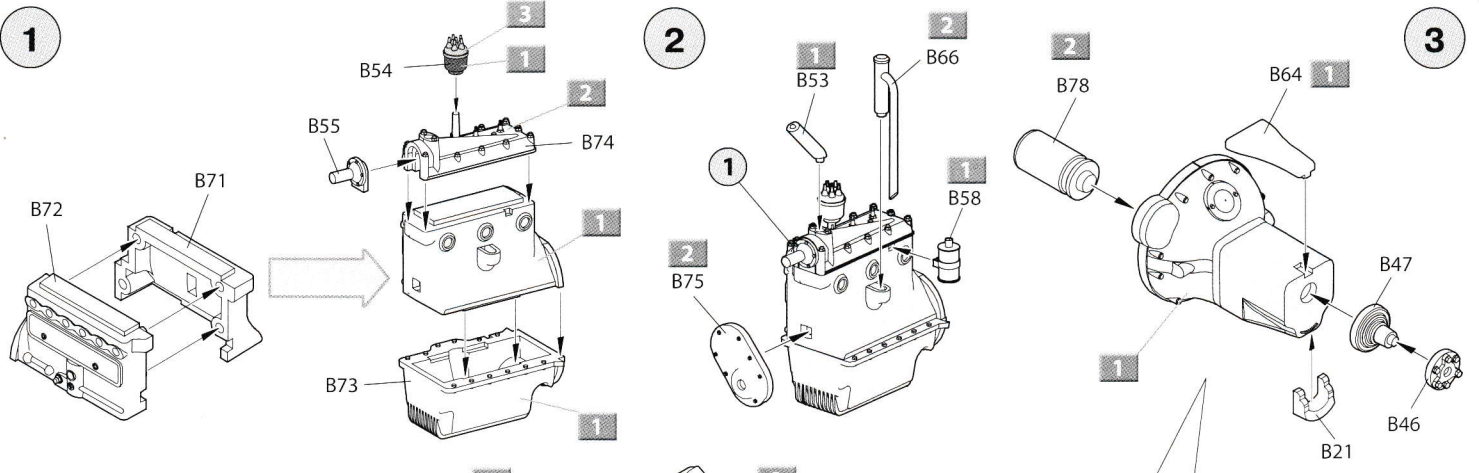
F Clear parts



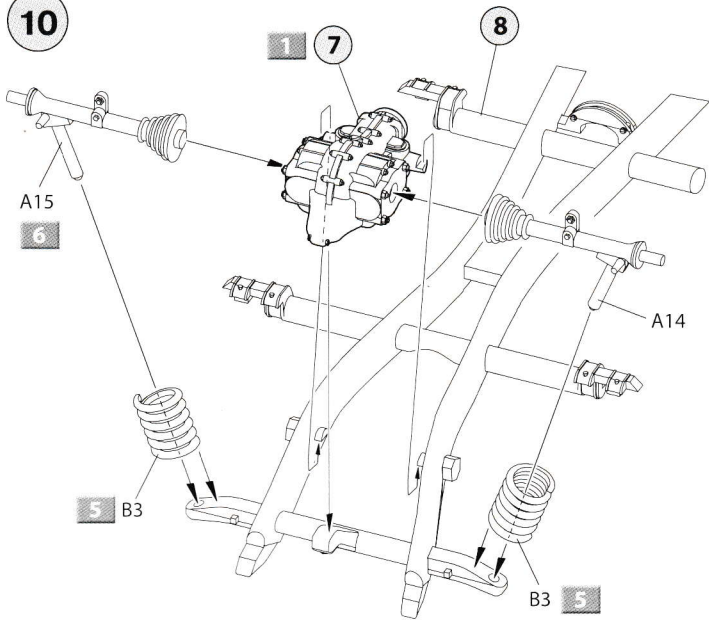
H



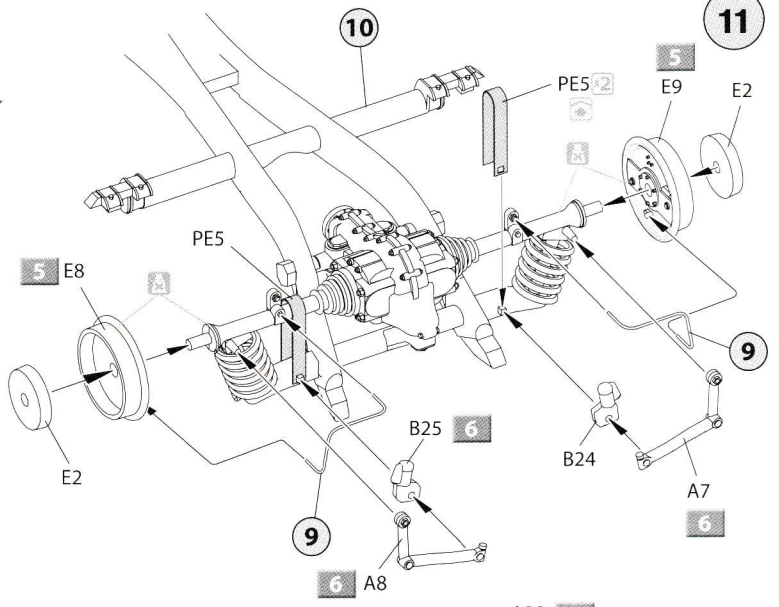
MiniArt Type 170V Cabriolet B 38018		SCALE 1:35
1 KW 15-86	4 513358	8 A-15721
2 KW 15-86	5 513358	9 A-15721
3 87112F	6 IA-128 058	10 IK-522 683
4 87112F	7 IA-128 058	11 IK-522 683



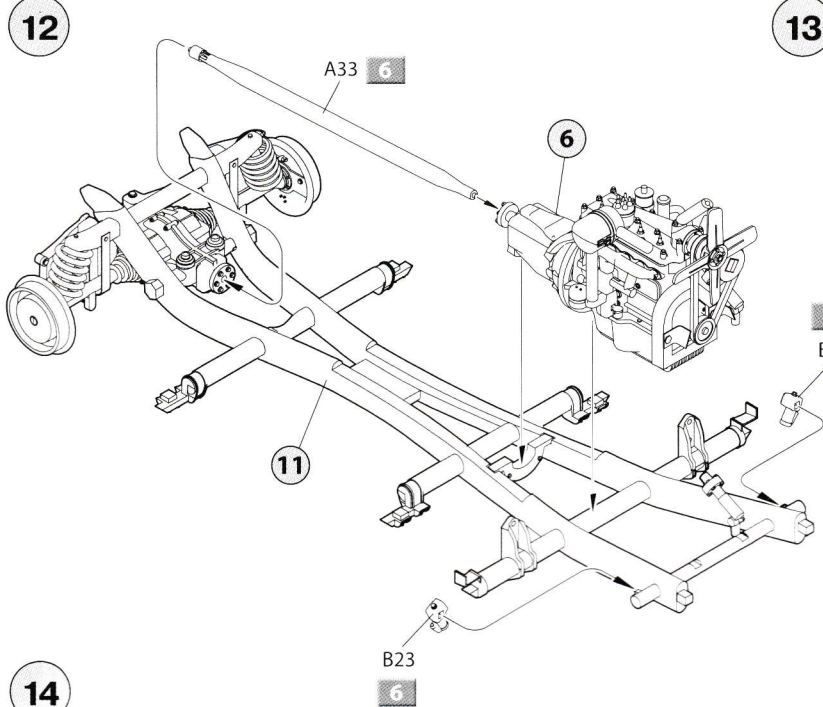
10



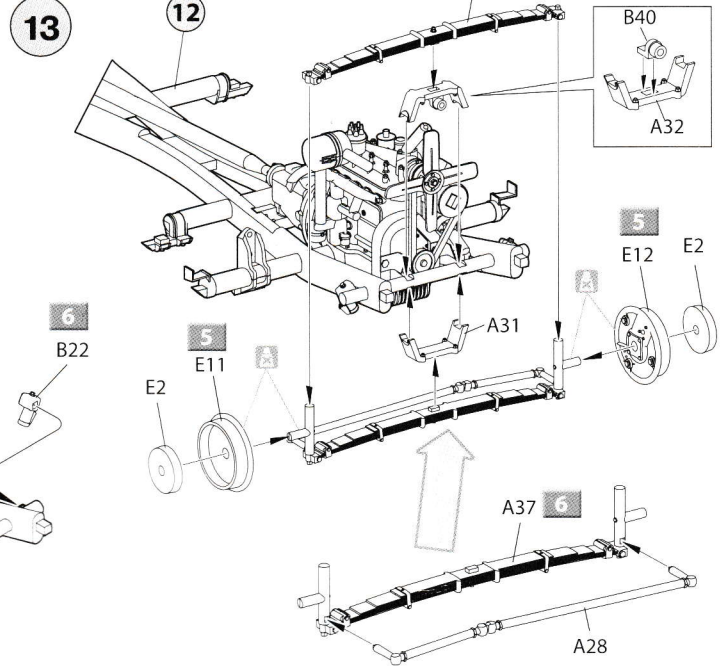
11



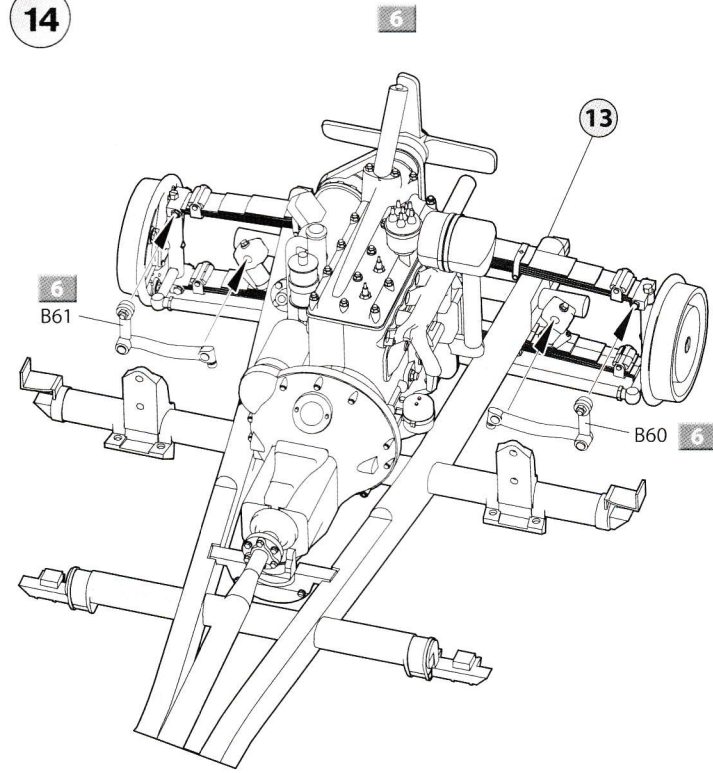
12



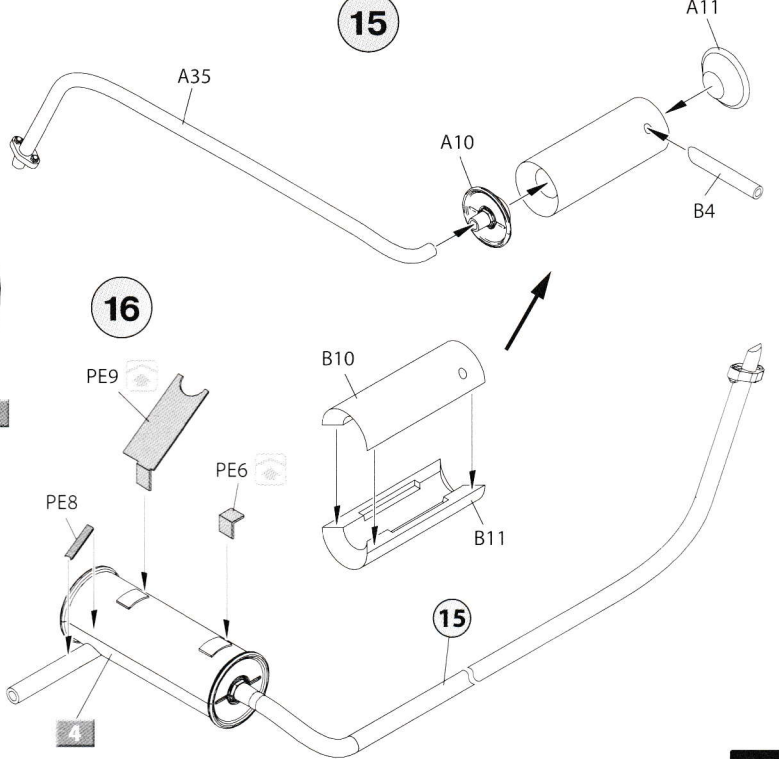
13



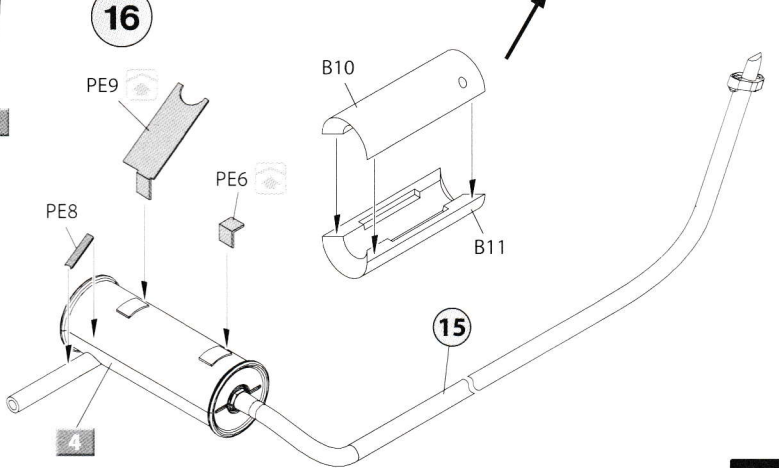
14



15

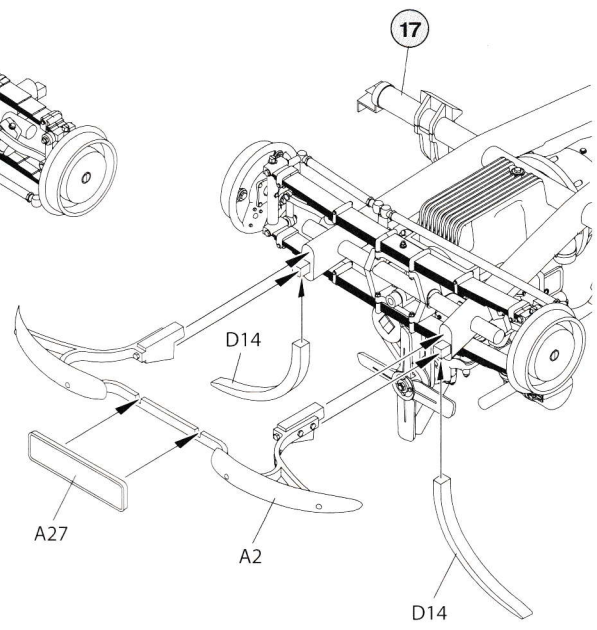
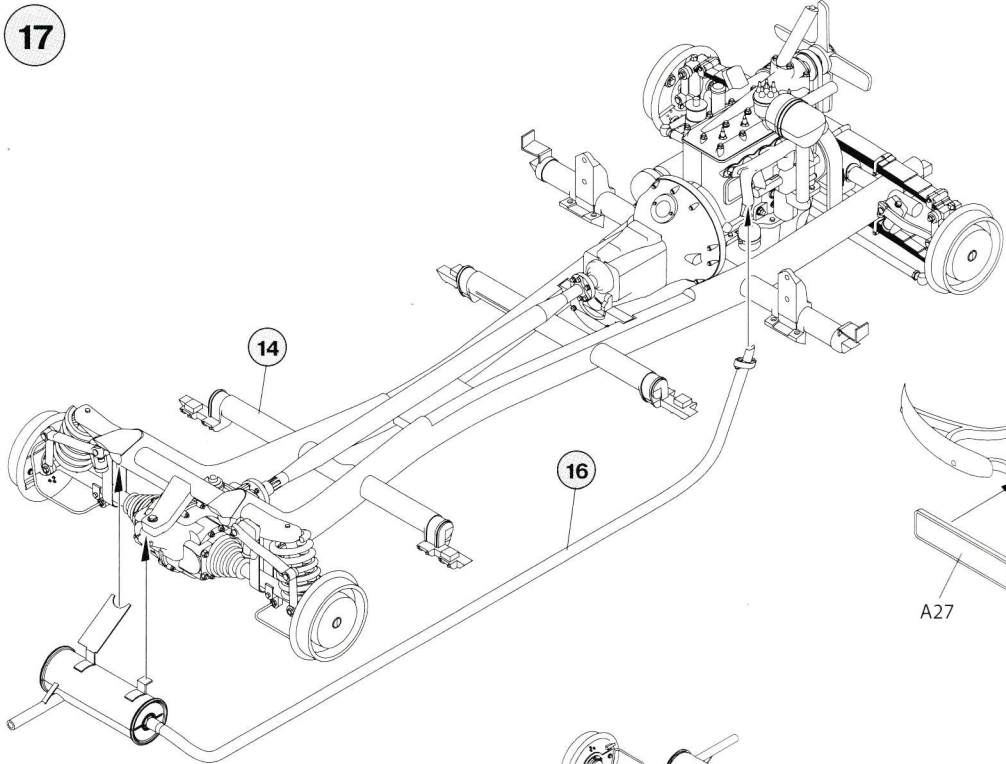


16



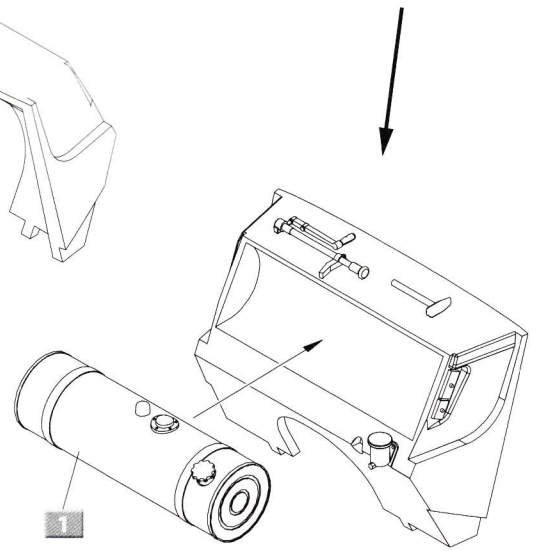
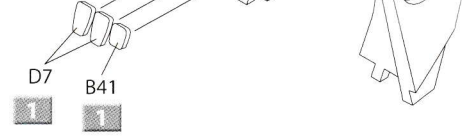
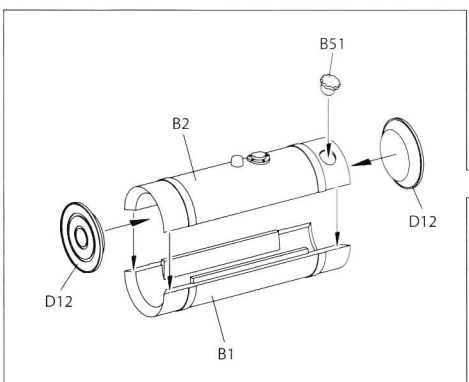
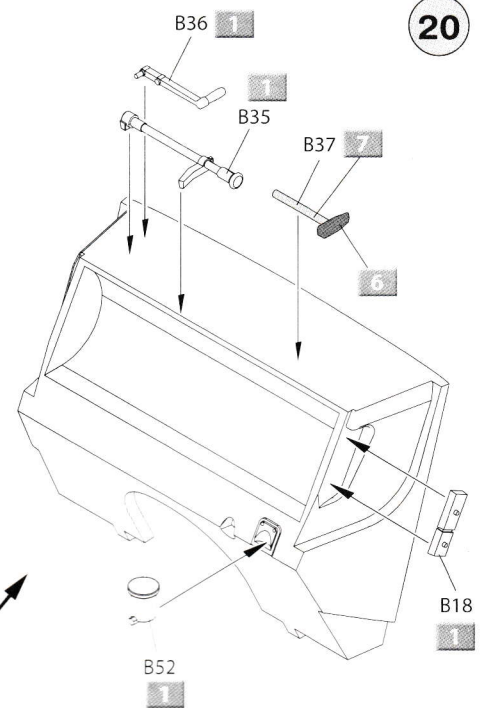
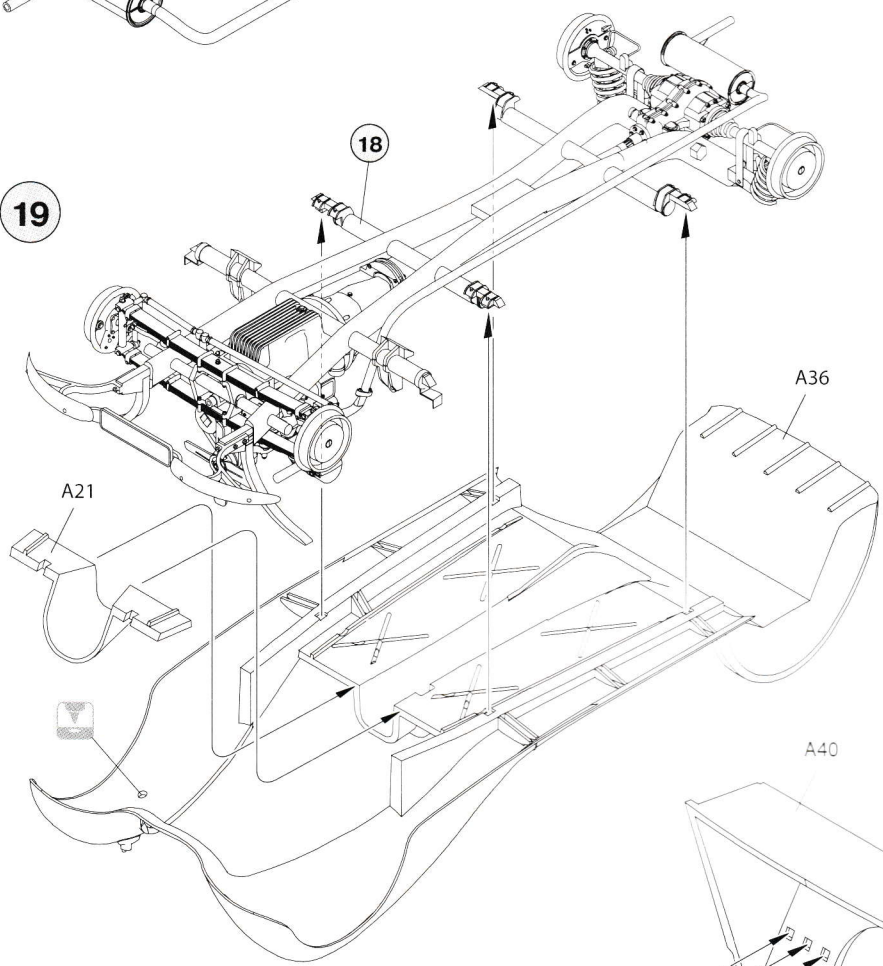
17

18



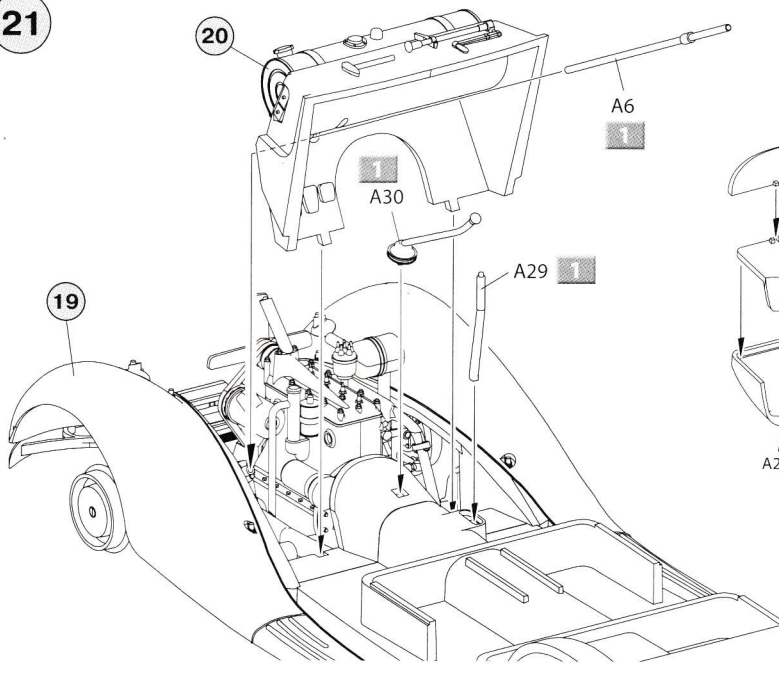
19

20

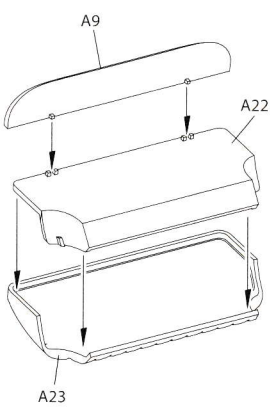


6

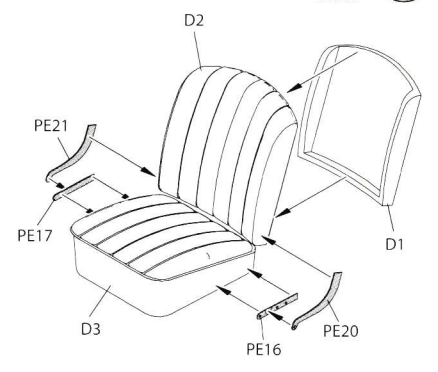
21



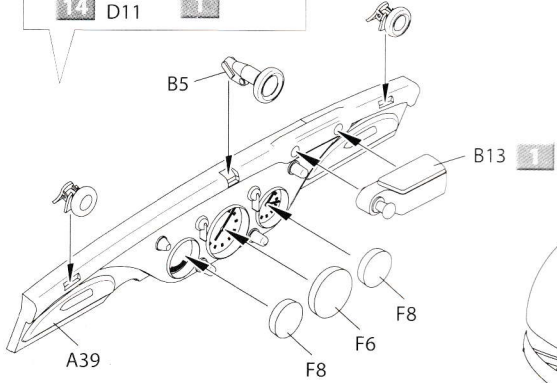
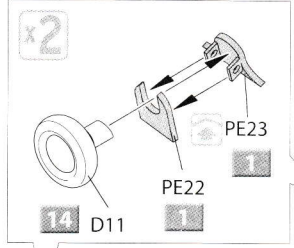
22



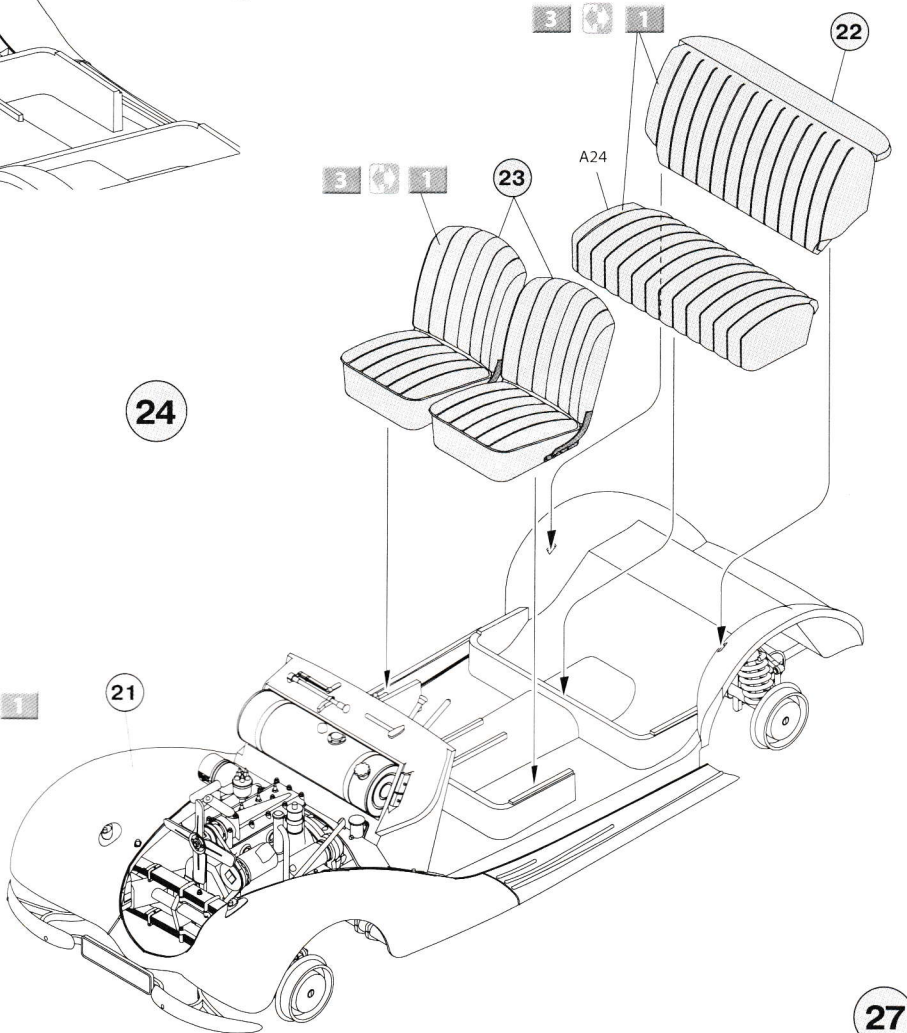
23



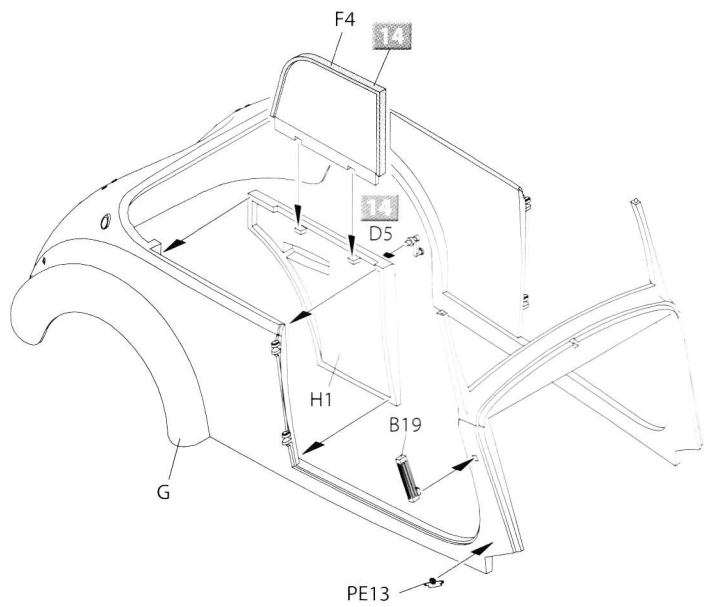
25



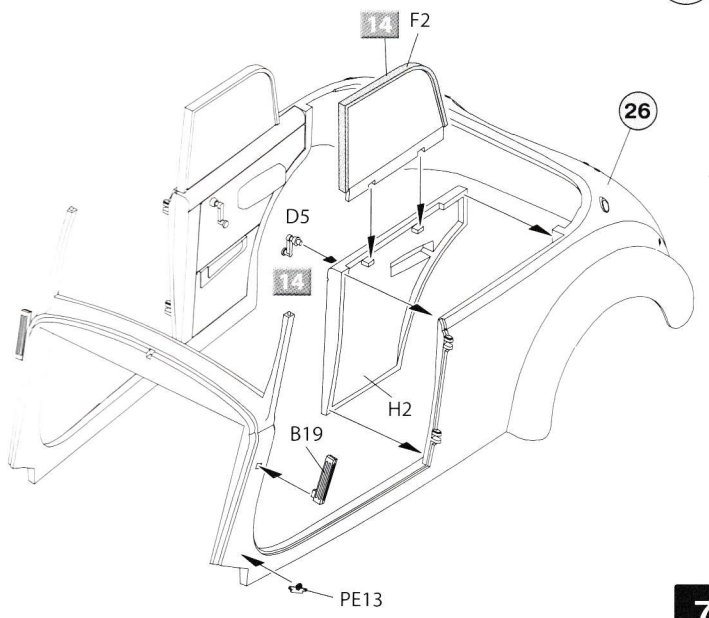
24



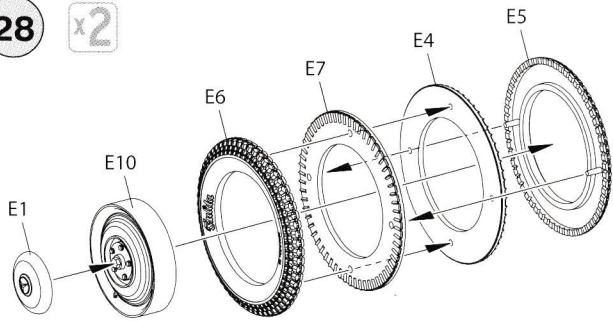
26



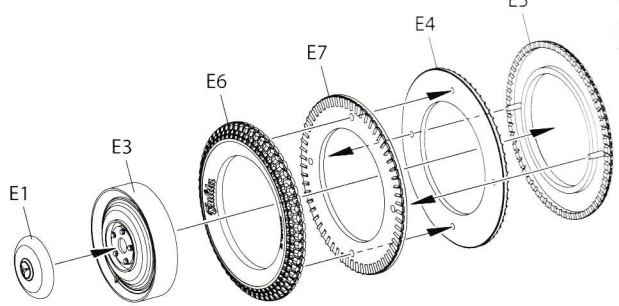
27



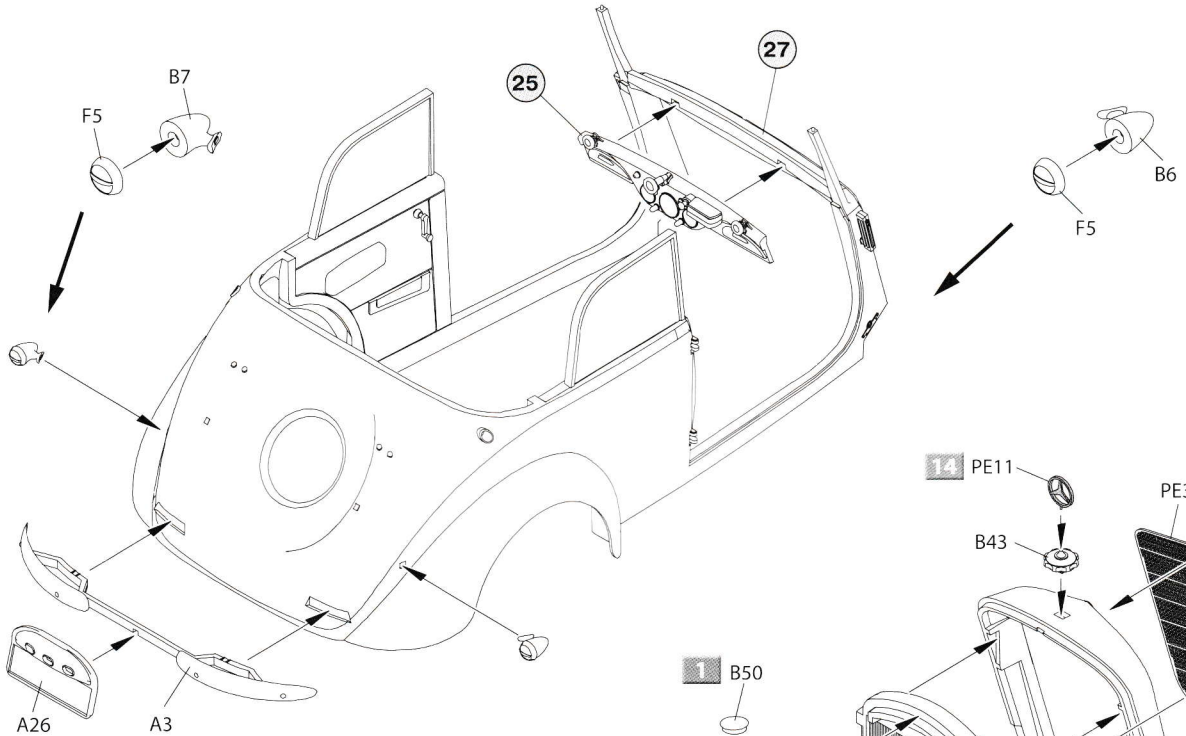
28 x2



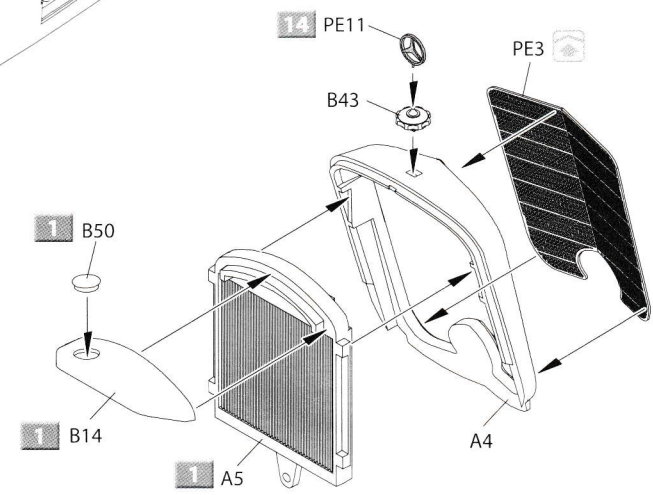
x2 29



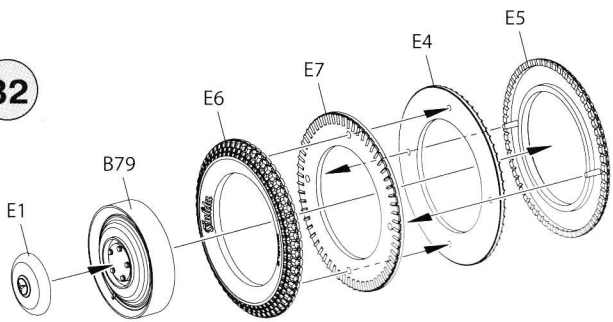
30



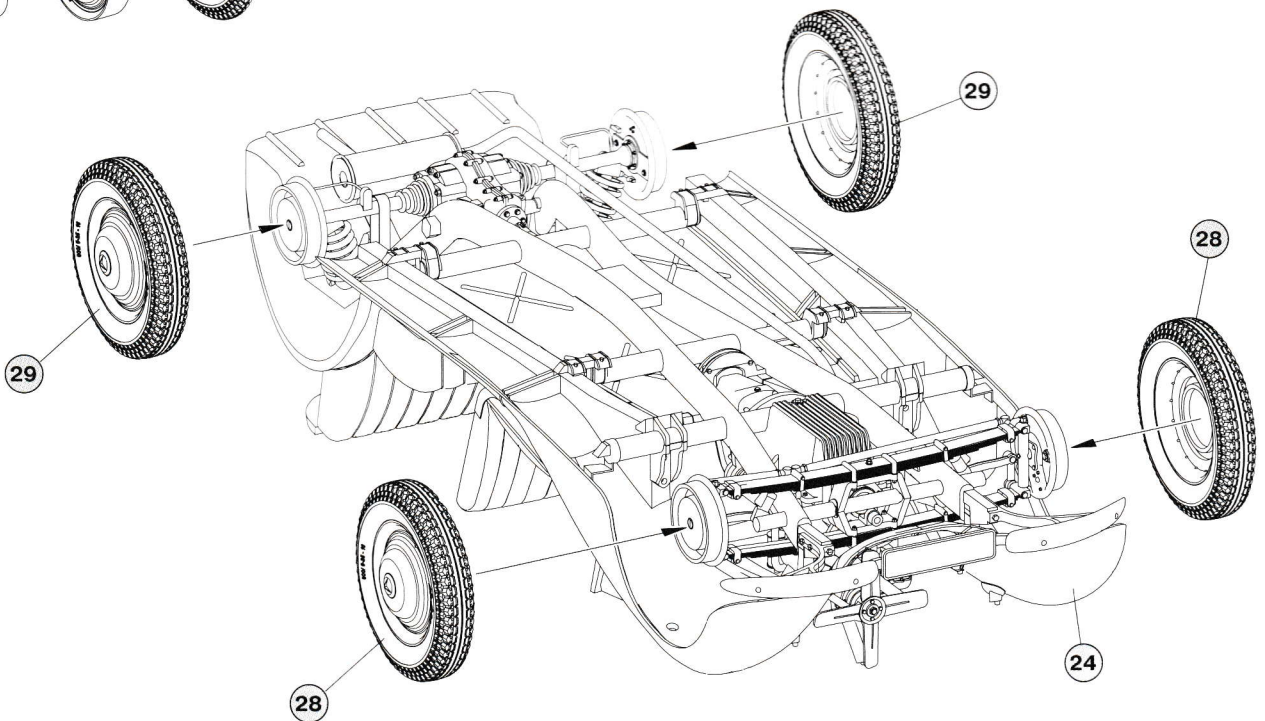
31

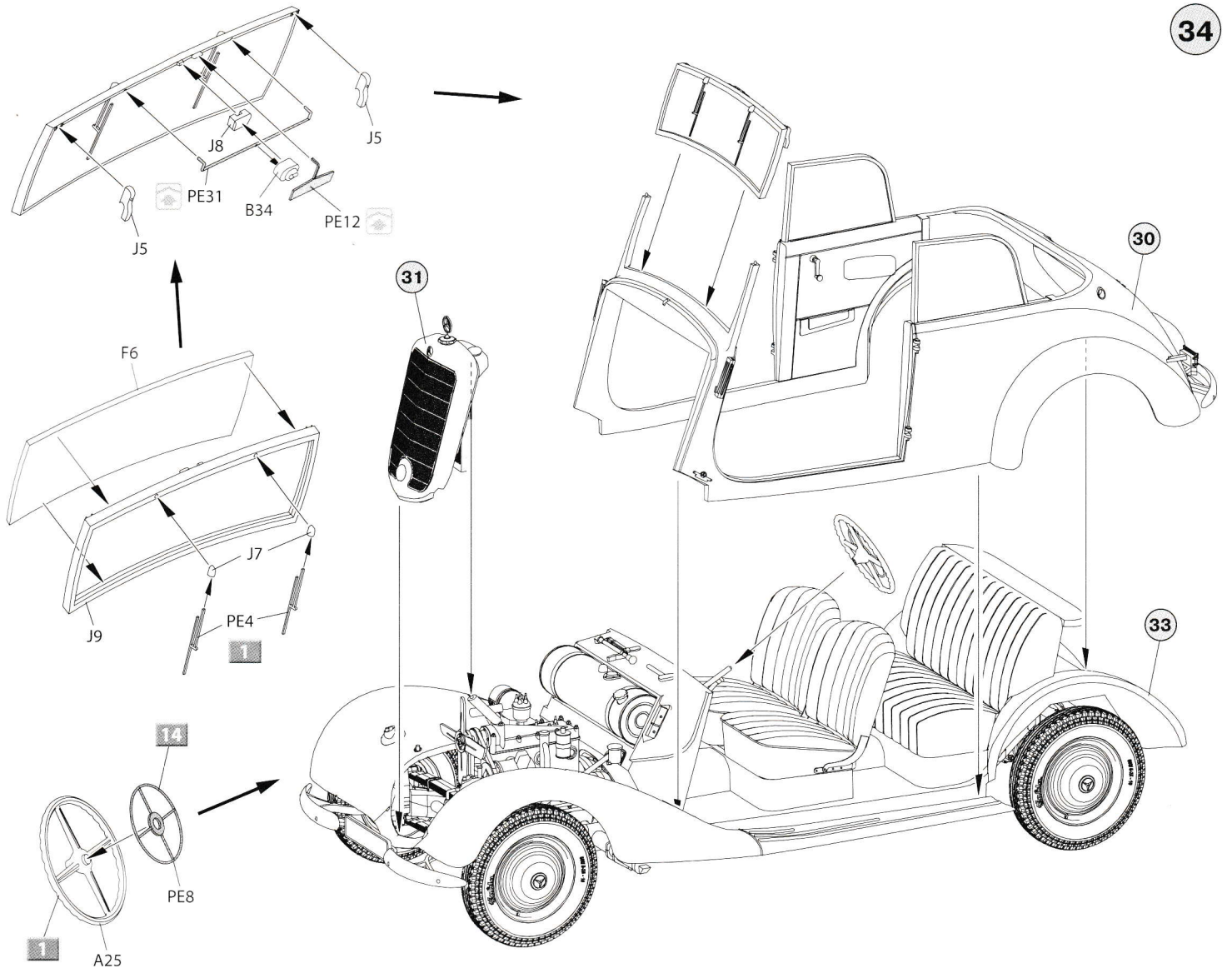


32

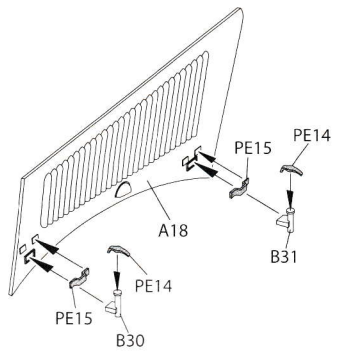


33

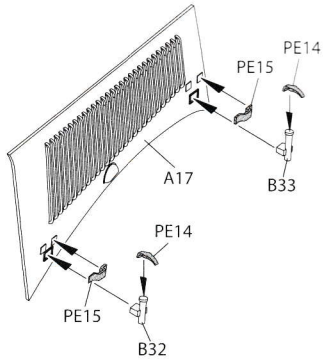




35



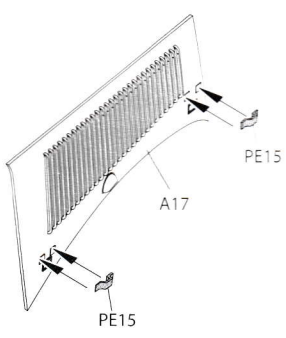
for variant with open cover



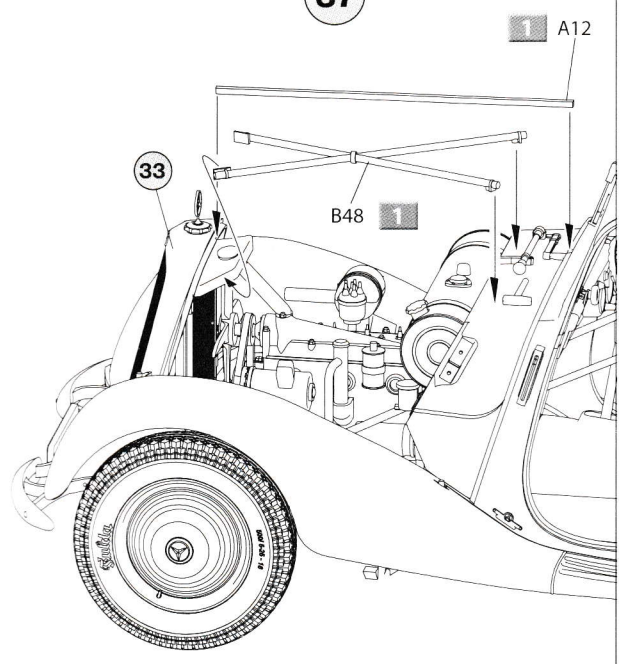
36



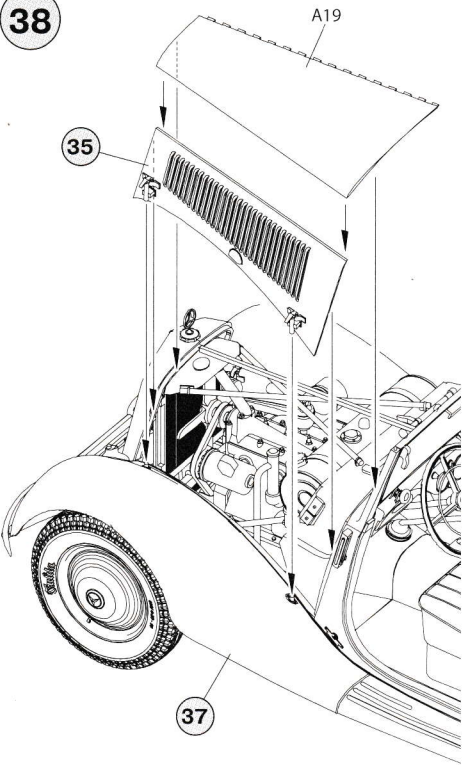
for variant with closed cover



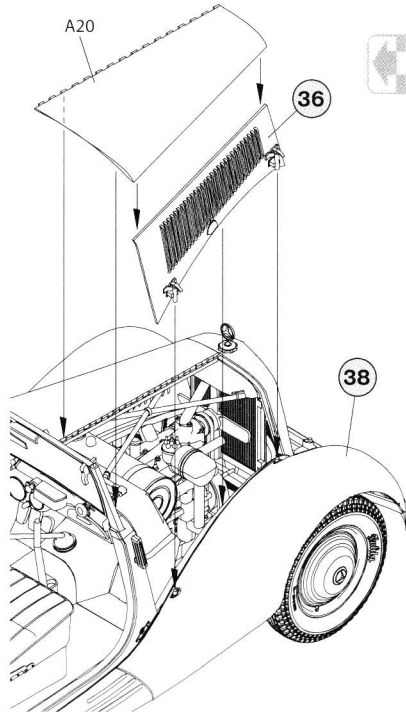
37



38

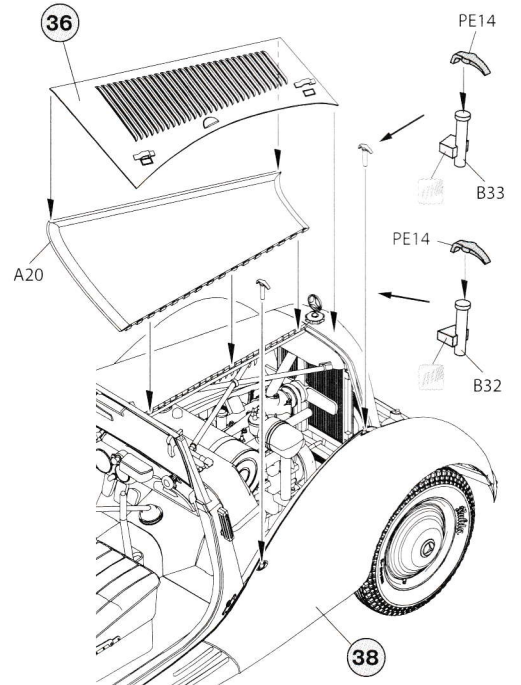


for variant with closed cover

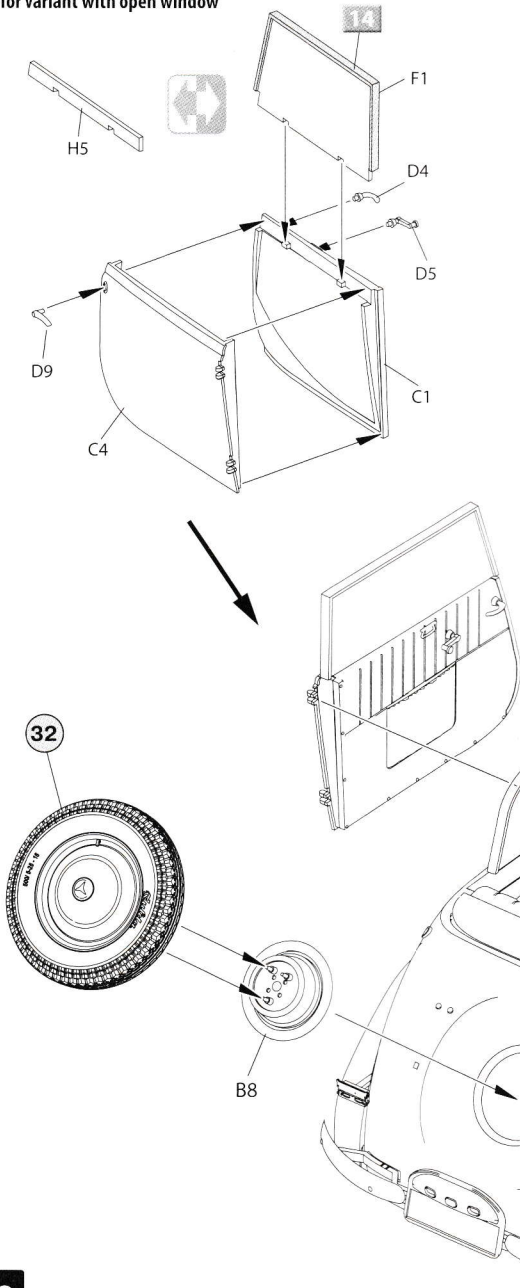


39

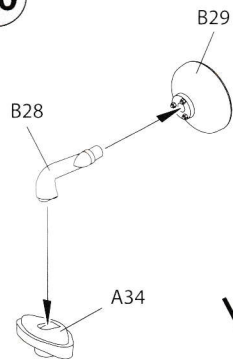
for variant with open cover



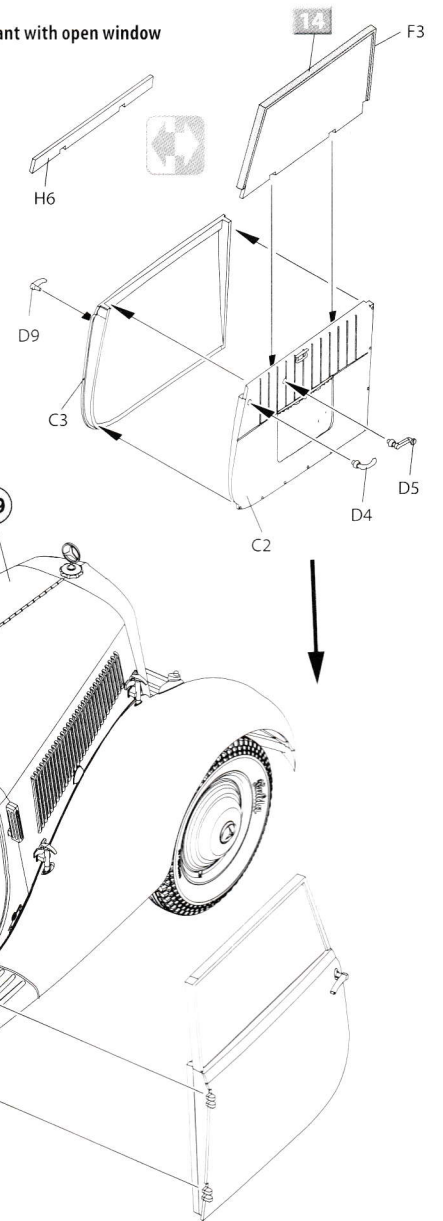
for variant with open window



40



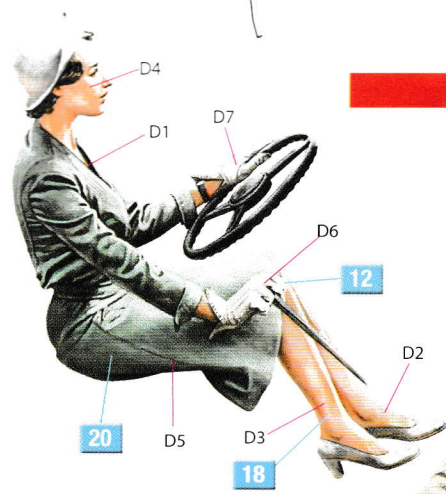
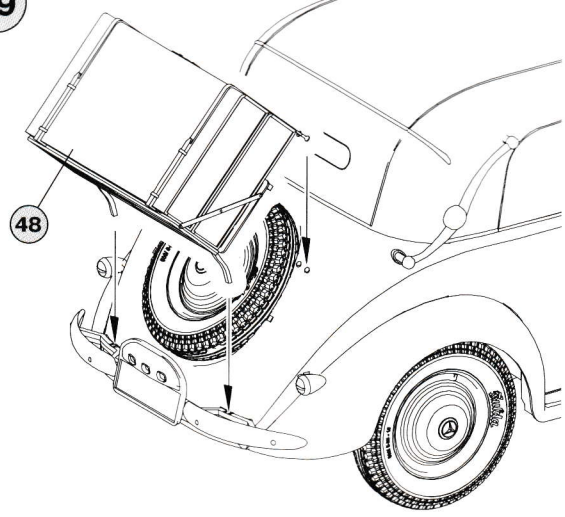
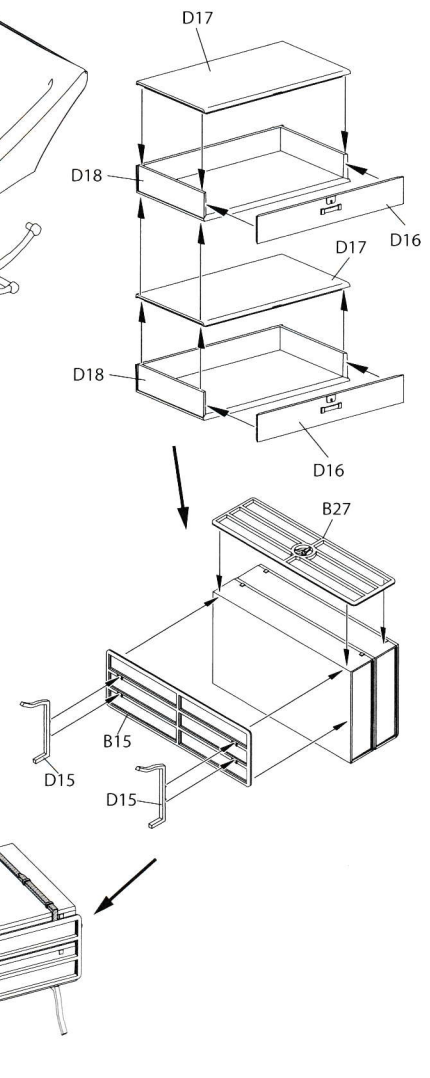
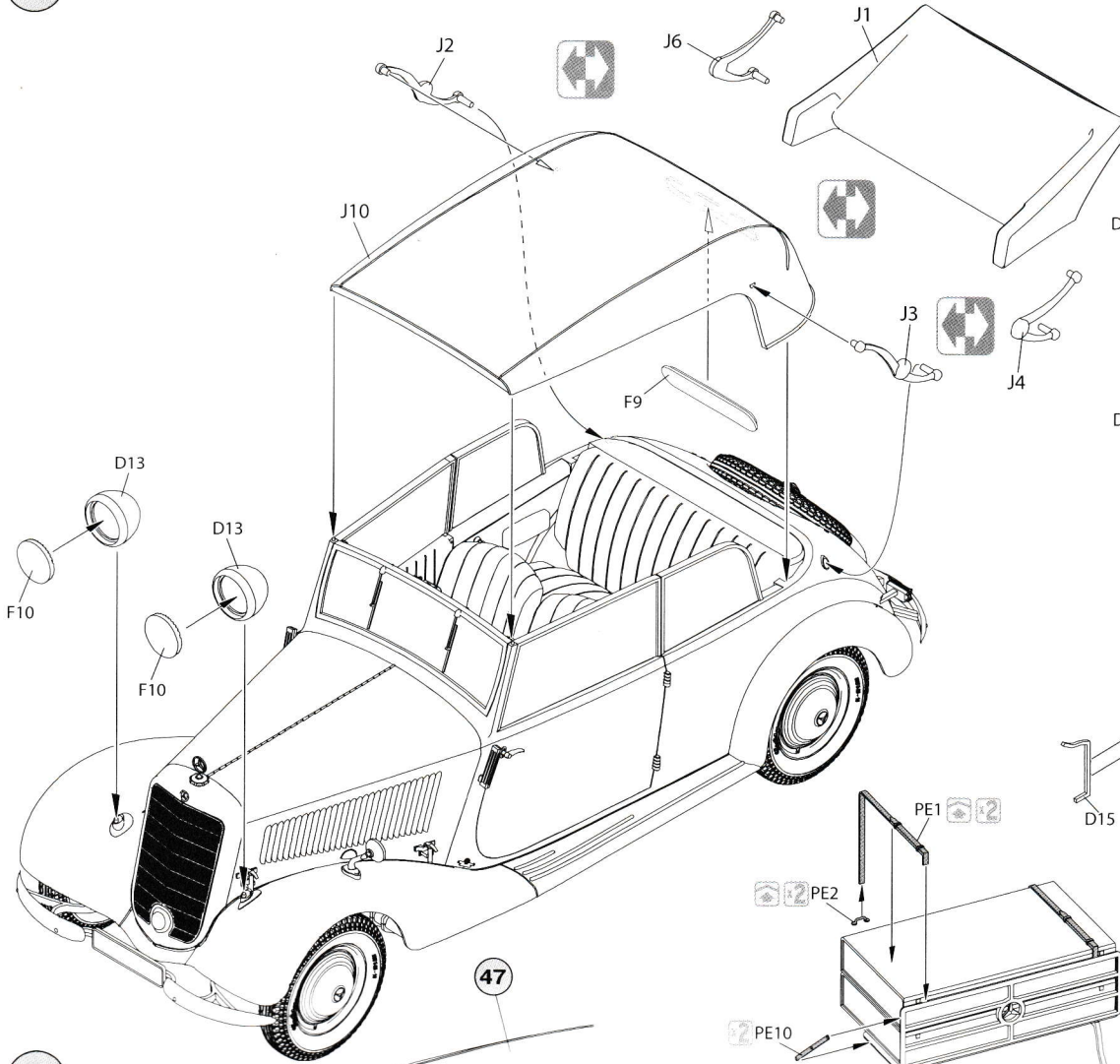
for variant with open window



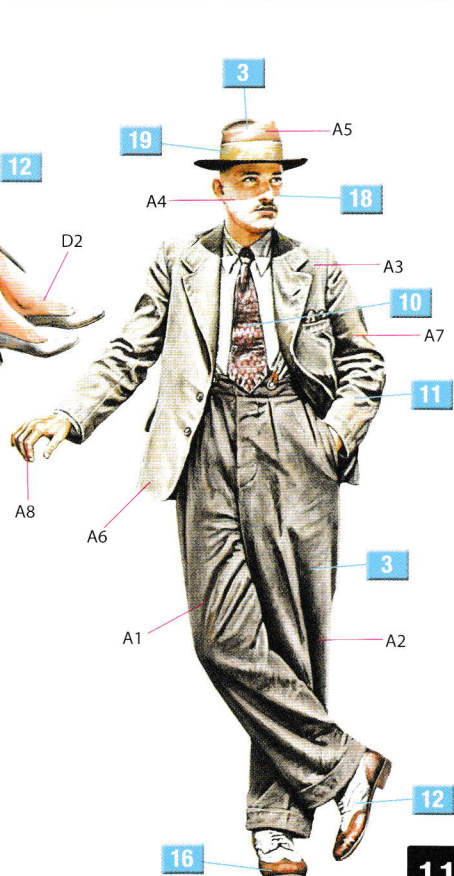
39

Canvas on close position

Canvas on open position



FIGURES

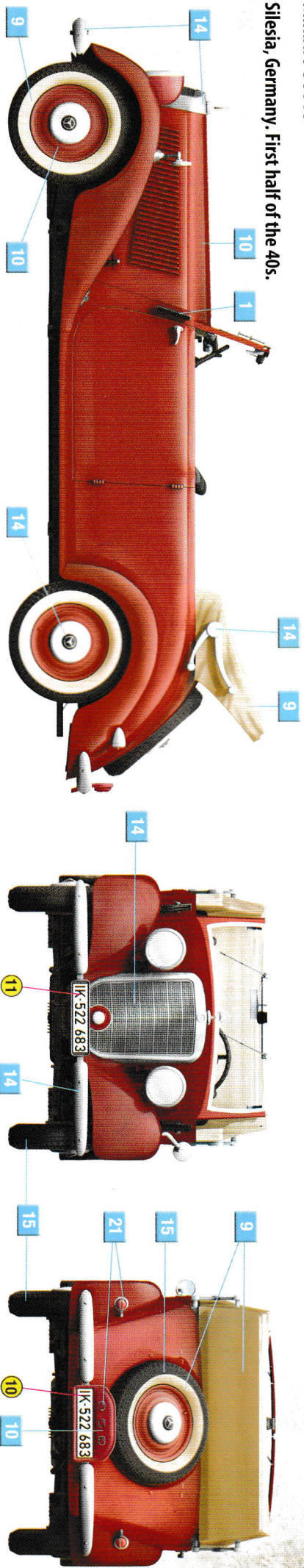


Nº	Color	Vallejo	Mr. Color	Life Color	Tamiya	AK	Mission Models	Hataka	AMMO MIG	Color name
1		70.950	033	LC-002	XF-01	RC-001	MMP-047	041	A.MIG-0046	Black
2		70.997	218	LC-024	XF-16	RC-020	MMM-008	139	A.MIG-0194	Aluminium
3		70.826	310	UA-765	XF-10	RC-035	MMP-033	186	A.MIG-0076	Brown
4		70.984	131	UA-701	XF-10	AK-709	MMW-001	130	A.MIG-0041	Dark Rust
5		70.864	028	LC-024	XF-56	AK-457	MMM-002	033	A.MIG-0191	Steel
6		70.863	078	LC-076	XF-84	RC-015	MMM-001	106	A.MIG-0045	Gun Metal
7		70.961	034	UA-061	XF-23	RC-238	MMP-048	05	A.MIG-0224	Light Blue
8		70.899	080	LC-010	XF-17	RC-036	MMP-065	521	A.MIG-0062	Dark Blue
9		70.928	111	LC-041	XF-15	RC-088	MMP-006	187	A.MIG-0027	Beige
10		70.946	327	LC-066	XF-09	RC-067	MMP-015	131	A.MIG-0014	Dark Red
11		70.990	011	LC-018	XF-20	RC-052	MMP-072	191	A.MIG-0910	Light Grey
12		70.951	062	LC-001	XF-02	RC-004	MMP-001	043	A.MIG-0050	White
13		70.978	039	UA-201	XF-60	RC-061	MMP-011	178	A.MIG-0010	Dunkelgelb
14		70.790	211	LC-074	X-11	AK-458	MMC-001	003	A.MIG-0195	Silver
15		70.862	137	UA-733	XF 85	RC-022	MMP-040	224	A.MIG-0033	Tire Black
16		70.984	041	LC-017	XF 68	RC 081	MMP-002	077	A.MIG-0085	Dark Brown
17		70.970	006	LC-012	XF-26	RC-047	MMP-034	019	A.MIG-0052	Green
18		70.815	051	LC-021	XF-15	RC-014	MMP-070	295	A.MIG-0116	Skinton
19		70.846	081	LC-016	XF-09	RC-218	MMP-015	076	A.MIG-0064	Yellow Brown
20		70.838	066	LC-011	XF-05	RC-007	MMP-004	080	A.MIG-0060	Bright Green
21		70.957	003	LC-006	XF-07	RC-006	MMP-003	103	A.MIG-0049	Red

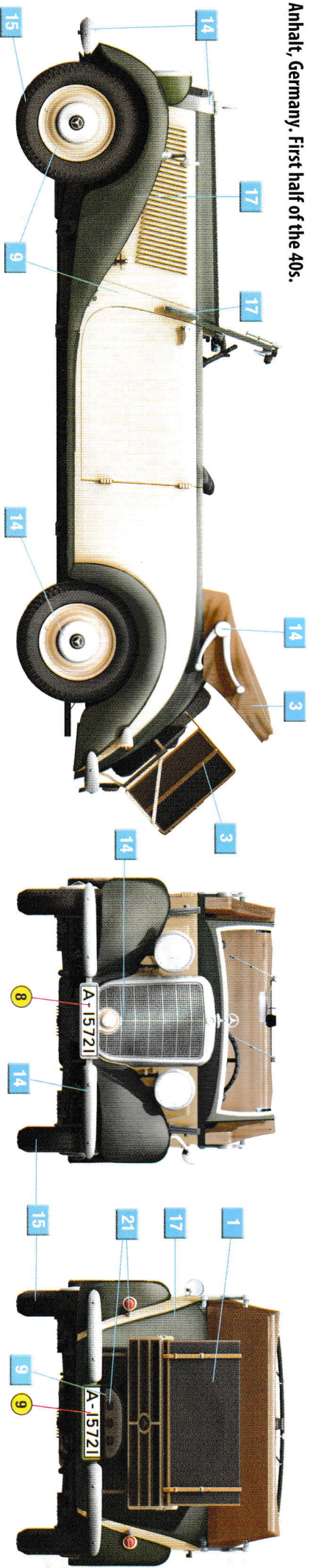
CARRIOLLET B

GERMAN CAR
TYPE 170V

Silesia, Germany. First half of the 40s.



Anhalt, Germany. First half of the 40s.



Kyiv, Ukraine. 1948.

